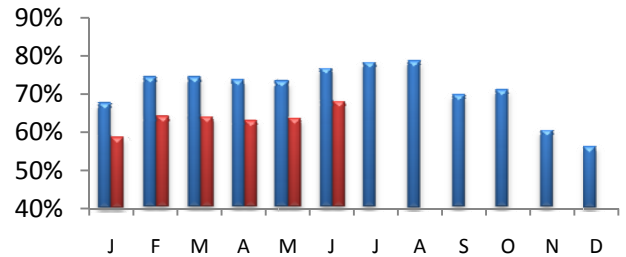


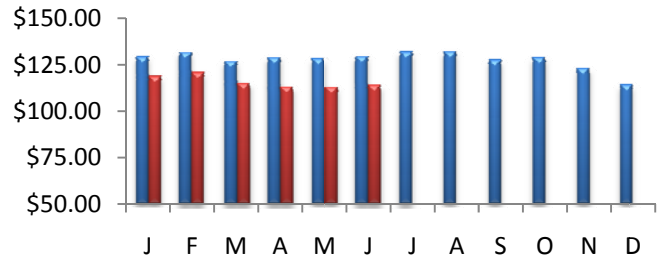
Countywide Hotel Occupancy

June's occupancy measured 68.1%, a decrease of -11.1% from last June's mark of 76.9%. The average occupancy for the top 25 markets was down -9.6%. Overall, US occupancy was also down -9.7% for the month.



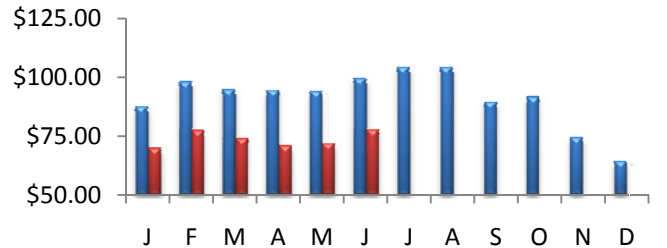
Average Daily Room Rate (ADR)

In June, county ADR went down by -12% over 2008 to reach \$114.21. The monthly change in room rates in the top 25 markets was -13.9%. US rates were down -9.9% for the month.



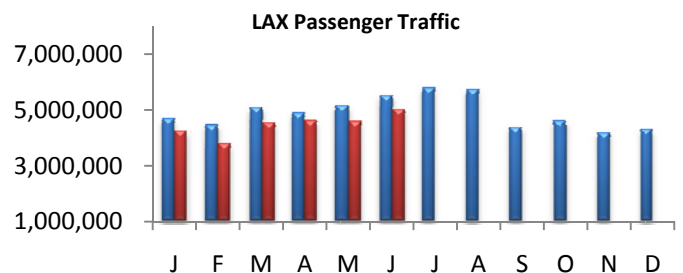
Revenue Per Available Room (RevPAR)

LA County RevPAR for the month of June was down -22.1% and finished the month at \$77.74. The RevPAR growth in the top 25 markets was down -22.2% for the month. The overall U.S RevPAR was down -18.6% for the month.



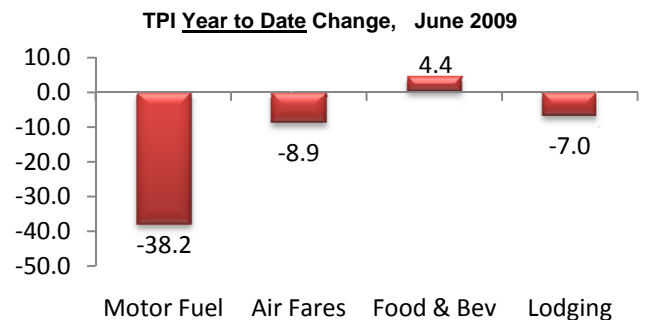
Airport Passenger Traffic

5.0 million Passengers passed through the gates of LAX in June, a decrease of -9.0% vs. last year. The domestic traffic at LAX dropped by -6.4%, while international traffic dropped by -15.8%. Passenger traffic at LA Ontario International also dropped year over year by 25.5% in June. The domestic traffic at LA/ONT was down by -25.8%, while surprisingly, the international traffic was up +10.2% compare to last year.



U.S. Travel Price Index

The TPI measured 9.5 percent lower in June than it did during the same month in 2008. Motor fuel prices were dropped down by -35.2% year over year, with airline fares dropped -17.1%. Food & beverage prices were up by 3.7% in June and lodging prices were down at -7.6%. The year-to-date changes (%) for four major tourism sectors are shown in the graph at the right.



Consumer Confidence June 08- June09

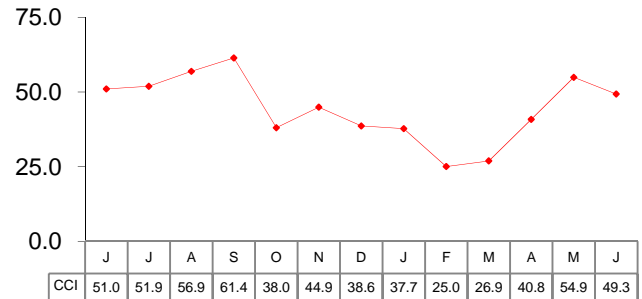
U.S. Consumer Confidence

After showing significant gains in April and May, the Consumer Confidence Index retreated a bit in June.

The index, which is compiled by The Conference Board and based on a survey of 5,000 U.S households, stood at 49.3 in June (1985=100). That was down from 54.8 in May, but still ahead of the April figure of 40.8.

Lynn Franco, director of the Conference Board's consumer research center, said the index "continues to imply that economic conditions, while not as weak as earlier this year, are nonetheless weak."

She added, "Expectations continue to suggest less negative conditions in the months ahead, as opposed to strong growth."



Legend:



2008



2009

Disclaimer:

This document is product of and compiled by LA INC. The Los Angeles Convention and Visitors Bureau. The information contained in this document has been obtained from various independent resources which are believed to be unbiased, reputable and reliable. However, LA INC. The Los Angeles Convention and Visitors Bureau does not represent the data contained herein to be definitive or free from error. The contents of this document should not be construed as a recommendation of particular policies or actions. Quotation and reproduction of this material is permitted with credit to LA INC. The Los Angeles Convention and Visitors Bureau.