

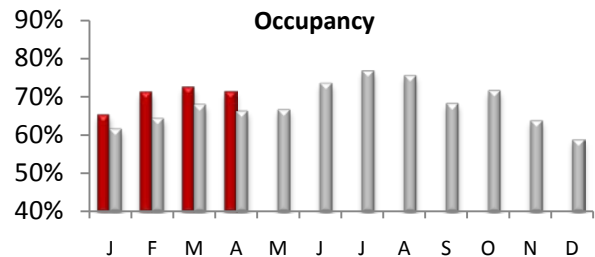


A Monthly Publication

May 2011

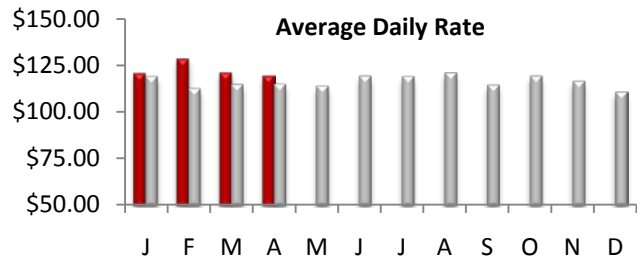
LA County Hotel Occupancy

April occupancy measured 71.1%, an increase of +7.2% from April 2010 of 66.3%. The average occupancy for the top 25 markets was also up +5.1%. Overall, U.S. occupancy was up +4.9% for the month.



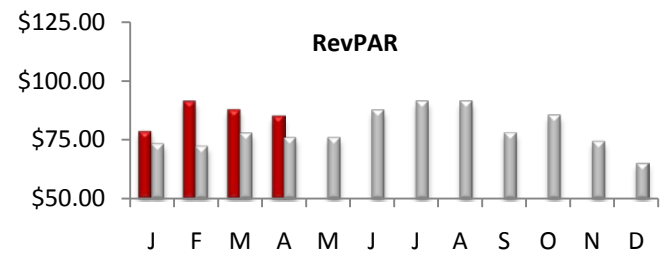
Average Daily Room Rate (ADR)

In April, LA county ADR measured \$119.38, an increase of +4.2% over last year. The monthly change in room rates in the top 25 markets was up +3.5%. U.S. rates also increased at +2.8% for the month.



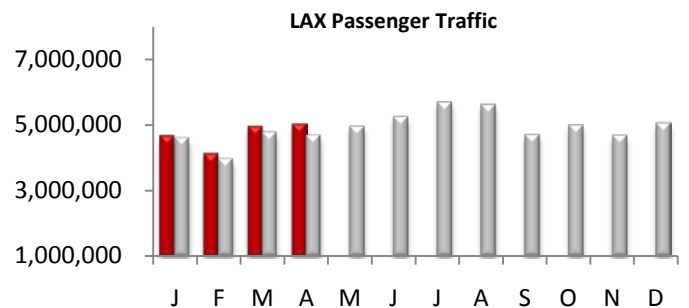
Revenue Per Available Room (RevPAR)

LA County RevPAR for the month of April was up +11.7% and finished the month at \$84.84. The RevPAR growth in the top 25 markets was also up +8.7% for the month. The overall U.S. RevPAR was up +7.9% for the month.



Airport Passenger Traffic

5.0 million Passengers passed through the gates of LAX in April, an increase of +7.2% vs. last year. The domestic traffic at LAX increased by +7.0%, while international traffic was also up +7.6%. Passenger traffic at LA/Ontario airport was down by -4.6% in April.



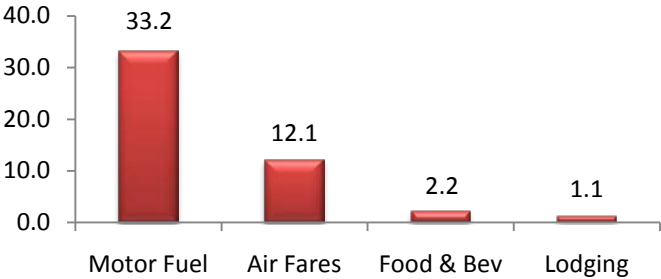
Legend: █ 2011 █ 2010



TPI April 2011 vs April 2010 (% Change)

U.S. Travel Price Index

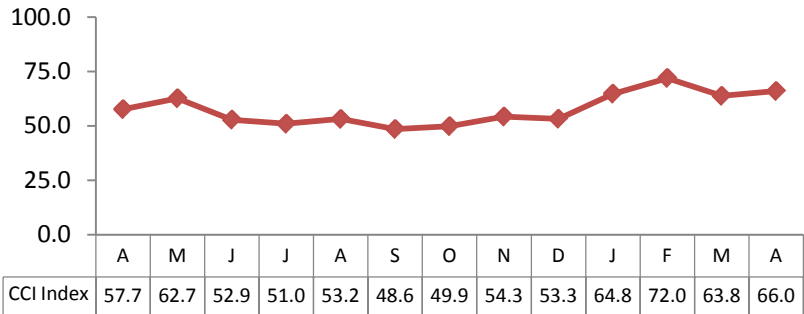
The April Travel Price Index (TPI) increased +7.3 percent compared to April 2010. The growth was mostly driven by gas prices and air fares rising from a year ago by +33.2 percent and +12.1 percent respectively. Lodging experienced an increase of +1.1% over April 2010.



Consumer Confidence- April 2011
12 months Performance

U.S. Consumer Confidence

According to U.S. Conference Board, the Consumer Confidence Index (CCI) increased to 66.0 in April 2011, compared with 57.7 in April 2010. The current CCI has also increased from last month's Index of 63.8 reported for March 2011.



Disclaimer:

The information contained in this document has been obtained from various independent resources which are believed to be unbiased, reputable and reliable. However, LA INC. The Los Angeles Convention and Visitors Bureau does not represent the data contained herein to be definitive or free from error. The contents of this report should not be construed as a recommendation of particular policies or actions

Travel Pulse is a publication of LA INC. The Los Angeles Convention and Visitors Bureau. Data for Travel Pulse was obtained from Smith Travel Research, Los Angeles World Airports, CIC Research, The Conference Board, TIA and the U.S. Department of Labor, unless otherwise noted, all data pertain to Los Angeles County. For additional information regarding travel and tourism in Los Angeles, contact LA INC.'s Research Department at floukrezis@lainc.us